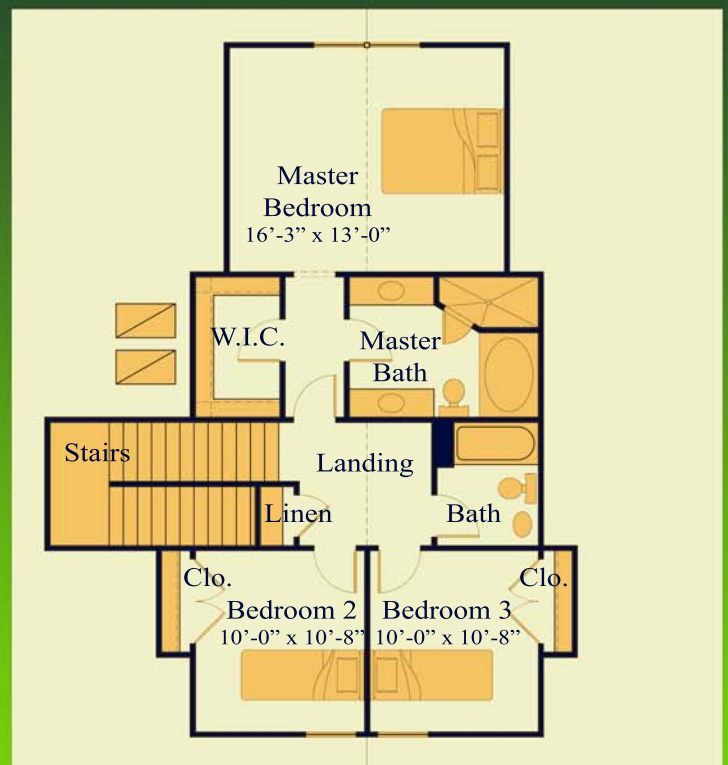


GROUND FLOOR



UPPER FLOOR

ROTHENBERG

HOMES

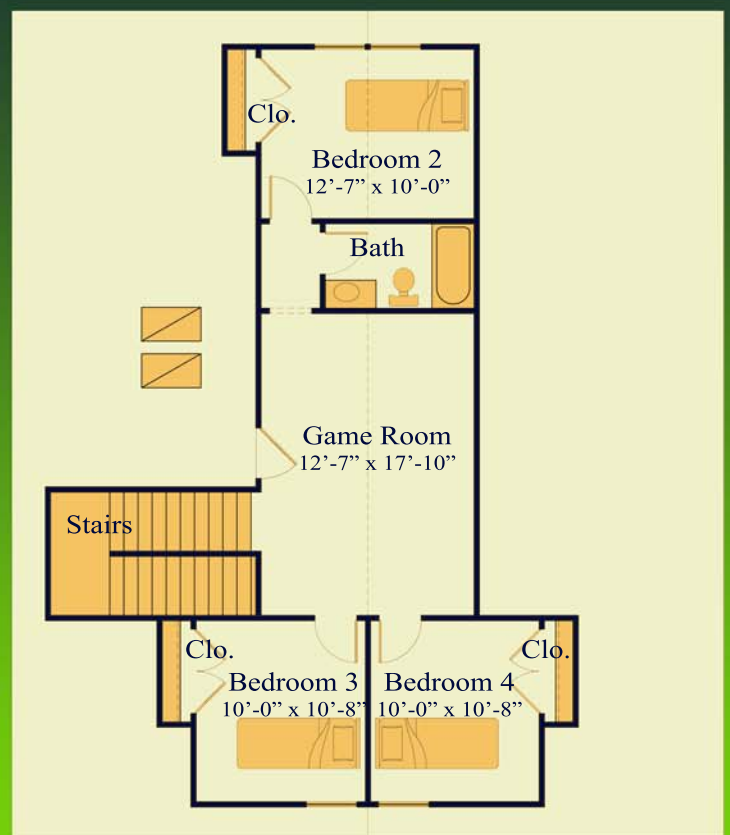
THE STRATHMORE 1800 S.F.

113 WAGON WHEEL TRAIL
GEORGETOWN, TX 78628
512.863.3115

rob@rothenberghomes.com
www.rothenberghomes.com



GROUND FLOOR



UPPER FLOOR

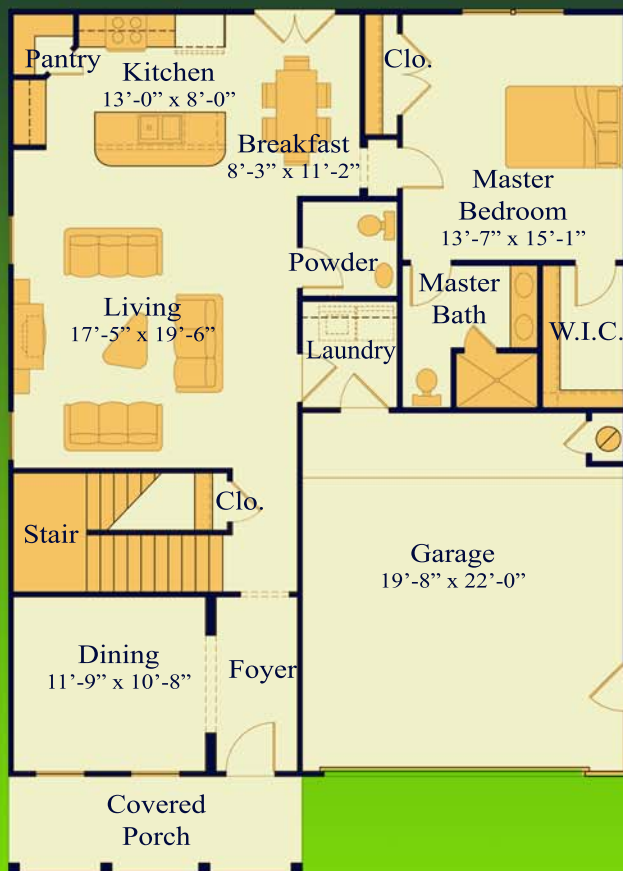
ROTHENBERG

HOMES

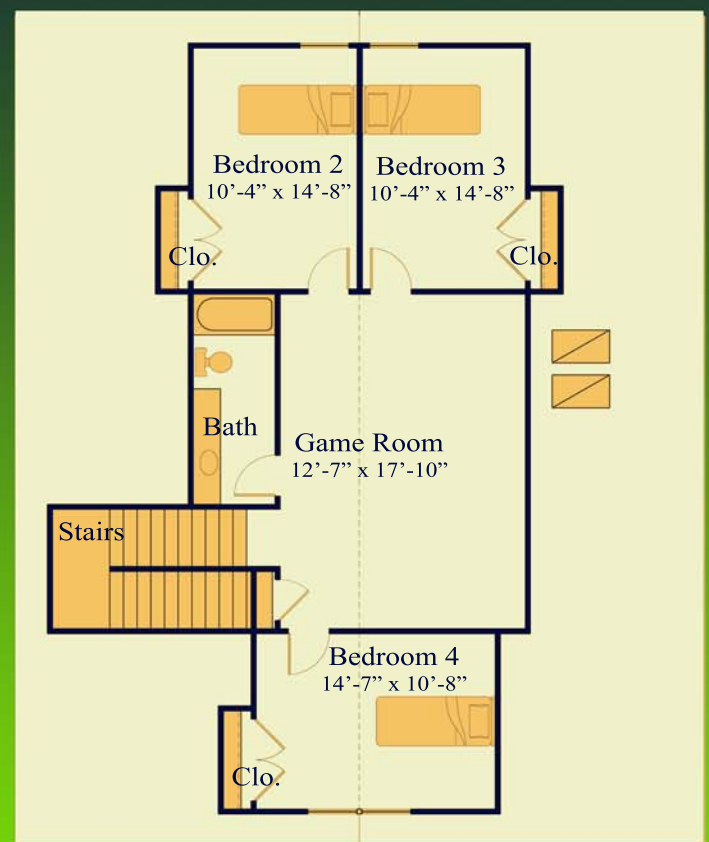
THE NORMAN 2000 S.F.

113 WAGON WHEEL TRAIL
GEORGETOWN, TX 78628
512.863.3115

rob@rothenberghomes.com
www.rothenberghomes.com



GROUND FLOOR



UPPER FLOOR

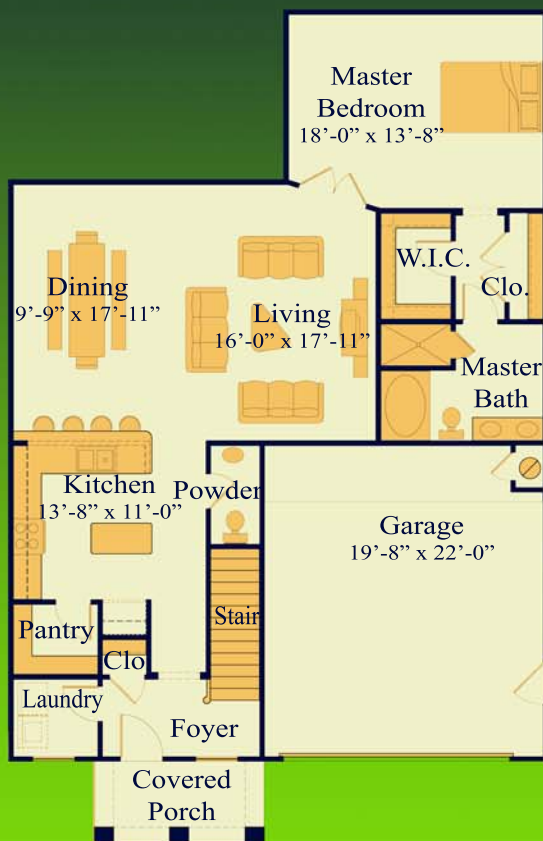
ROTHENBERG

HOMES

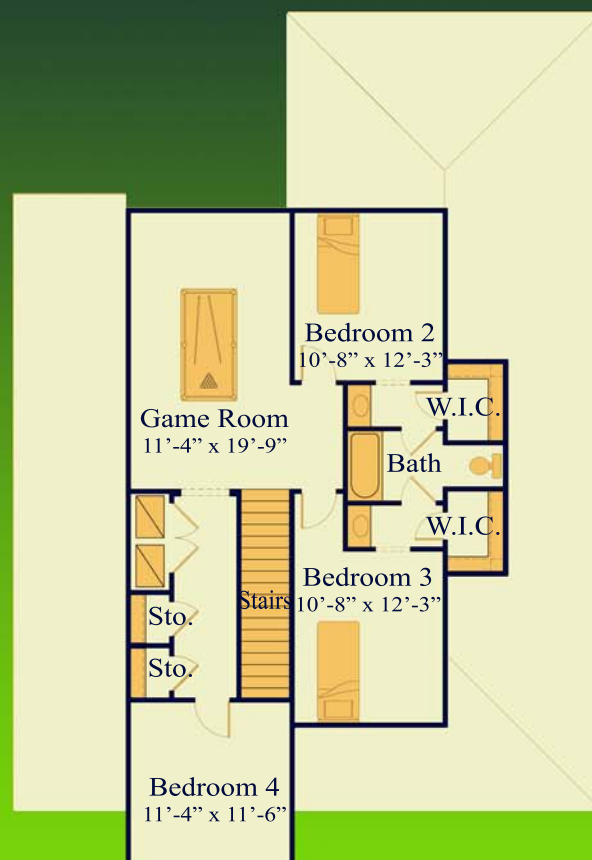
THE OLIVER 2300 S.F.

113 WAGON WHEEL TRAIL
GEORGETOWN, TX 78628
512.863.3115

rob@rothenberghomes.com
www.rothenberghomes.com



GROUND FLOOR



UPPER FLOOR

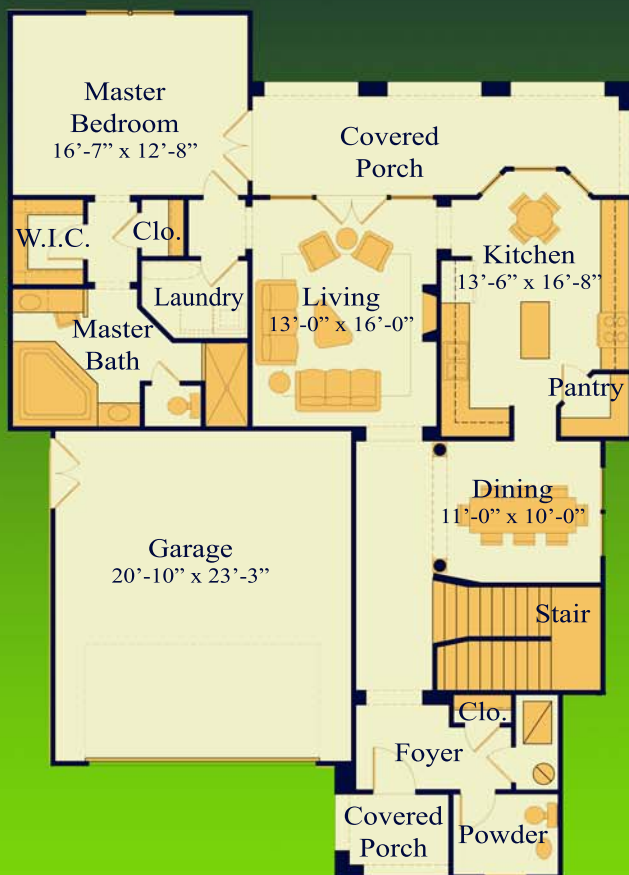
ROTHENBERG

HOMES

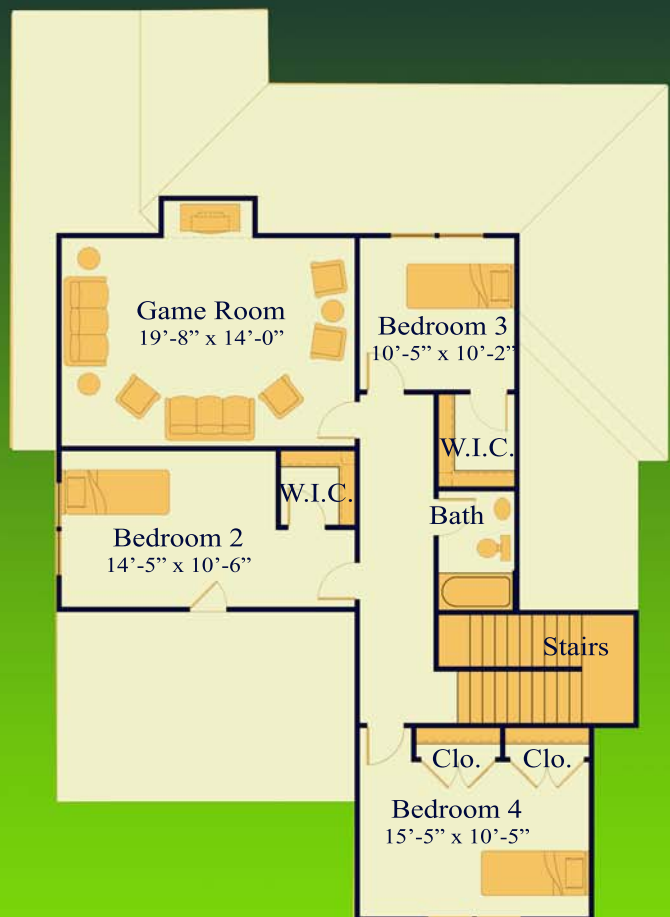
THE PAMONA **2350 S.F.**

**113 WAGON WHEEL TRAIL
GEORGETOWN, TX 78628
512.863.3115**

**rob@rothenberghomes.com
www.rothenberghomes.com**



GROUND FLOOR



UPPER FLOOR

ROTHENBERG

HOMES

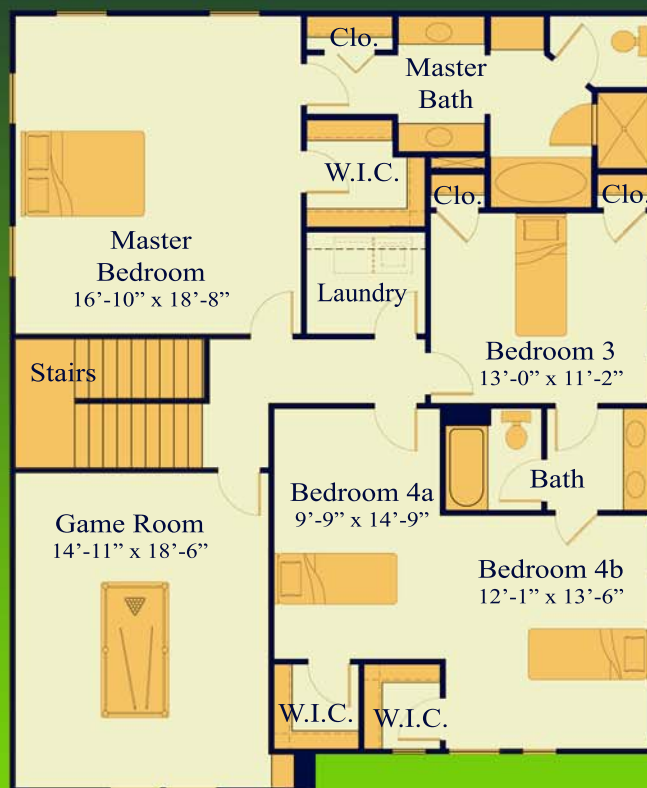
THE LOUIS 2600 S.F.

**113 WAGON WHEEL TRAIL
GEORGETOWN, TX 78628
512.863.3115**

**rob@rothenberghomes.com
www.rothenberghomes.com**



GROUND FLOOR



UPPER FLOOR

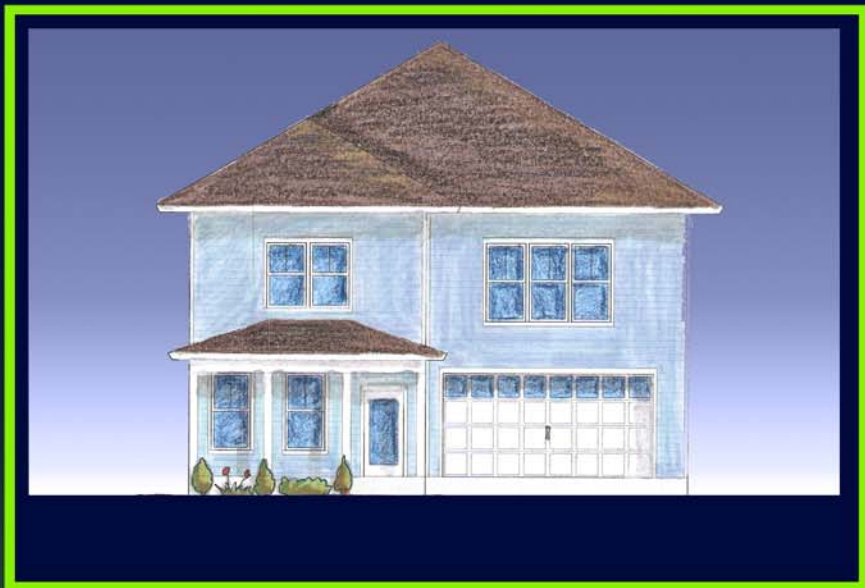
ROTHENBERG

HOMES

THE FELIX 2900 S.F.

**113 WAGON WHEEL TRAIL
GEORGETOWN, TX 78628
512.863.3115**

**rob@rothenberghomes.com
www.rothenberghomes.com**



GROUND FLOOR



UPPER FLOOR

ROTHENBERG

HOMES

THE WILMONT 2900 S.F.

**113 WAGON WHEEL TRAIL
GEORGETOWN, TX 78628
512.863.3115**

**rob@rothenberghomes.com
www.rothenberghomes.com**



Rothenberg Homes

113 Wagon Wheel Trail

Georgetown, TX 78628

PH. 512.863.3115

Fax: 866.212.6874

rob@rothenberghomes.com

www.rothenberghomes.com

2006 Price List

Plan	Area	Price
The Strathmore	1,837 s.f.	\$198,000
The Norman	2,017 s.f.	\$212,000
The Oliver	2,301 s.f.	\$224,000
The Pamona	2,367 s.f.	\$234,000
The Louis	2,482 s.f.	\$248,000
The Felix	2,915 s.f.	\$248,000
The Wilmont	2,913 s.f.	\$251,000



Rothenberg Homes

113 Wagon Wheel Trail

Georgetown, TX 78628

PH. 512.863.3115

Fax: 866.212.6874

rob@rothenberghomes.com

www.rothenberghomes.com

2006 Upgrades

Feature	Price	Notes
Front Sprinklers*	\$2,000	
Rear Sprinklers*	\$2750	
Sod Backyard*	\$2,200	
Gas Appliances*	\$1,500	
Gas Fireplace	\$1,000	Must be combined with Gas Appliance Option
Wood Burning Fireplace	\$1,500	
Stainless Steel Appliances	\$1,000	
Tile Kitchen Countertops	\$750	
Granite Kitchen Countertops	\$1,500	
Stained Concrete	No charge	First floor only
Garage Sheetrock	\$2,200	
Garage Tape and Float	\$550	
Garage Paint	\$1,000	
Maple 42" Kitchen Cabinets	\$1,100	
Carriage House Garage Door	\$500	
Archtop Front Door	\$500	
Crown Molding	\$250	Per room
Wood Window Trim	\$1,000	
Molded Interior Doors	\$550	
Upgraded Light Fixtures	\$660	
Wood Stairs	\$2,200	
Fencing	\$20 per lineal foot + \$150 per gate	
Stone or Brick Exterior	Varies	

Other options available upon request

***May vary due to site conditions**